

MINISTRY OF COMMERCE AND INDUSTRY, EGYPT

FOUAD I. INSTITUTE

HYDROBIOLOGY AND FISHERIES

NOTES AND MEMOIRS No. 31

PLANKTON OF THE EGYPTIAN WATERS

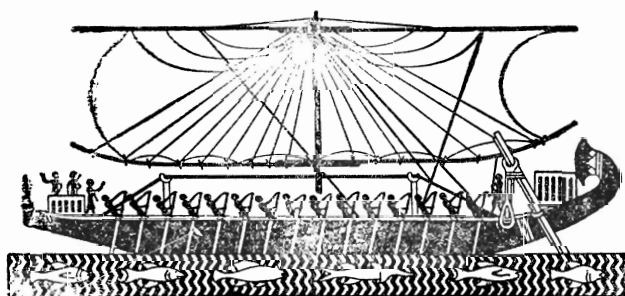
Two Cladocera from the Plankton

(with 2 Figures and 2 Plates)

BY

F. M. GHAZZAWI, B.Sc. (*Cairo*), Ph.D. (*Liverpool*)

*Scientific Assistant,
Hydrobiology and Fisheries Directorate.*



CAIRO
GOVERNMENT PRESS, BULÂQ
1938

Plankton of the Egyptian Waters .

Cladocera of the Plankton

BY

F. M. GHAZZAWI, B.Sc., Ph. D.

(1) *Podon Polyphemoides*, (leuck.) fig. (1), plate 1.

In his preliminary report on the Fishery Grounds near Alexandria, professor Adolf Steuer (4) mentions on page 4 that "of the Entomostraca, *Podon*, e.g. was not found. Neither was this genus met with at Port-Said by the Cambridge Expedition (Gurney (2) 1927), but Macdonald (3) mentions *Podon polyphemoides* from that region, unfortunately without any date". I myself (1) have not met with this genus neither at Port-Said nor at any of the other stations from where plankton catches were regularly collected from the Suez Canal for over a year, but on March 6, 1937, *Podon* appeared in considerable numbers among the plankton catches taken from the Eastern Harbour of Alexandria.

On March 16, *Podon* was also found in the Western Harbour. Females with eggs in their brood pouches were seen. It was only one species, namely *Podon polyphemoides* (Leuck.), fig. (1). It is easily distinguished from all other species by the number of setae on the exopodites of the legs, which are: 3 : 3 : 3 : 2, that is:

1st. leg	2nd. leg	3rd. leg	4th. leg
3	3	3	2

Specimens of this *Podon* were sent to Professor Steuer, who kindly confirmed my identification.

(2) *Penilia avirostris*, Dana., fig. (2), plate II.

Gurney (2) records this species among the plankton collected by the Cambridge Expedition to the Suez Canal, but without figures. I have found it only at S.C. 6 (Port-Tewfik) in July, and it is appropriate to insert here a figure of this species, together with a microphotograph, as a guide for its identification to research workers. It is figured also in Steuers' paper (*Thalassia*, Vol. I, No. 4).

References

- GHAZZAWI, F. M., 1936.—Plankton of the Egyptian waters. A Study of the Suez Canal Plankton. Notes and Memoirs No. 24 Fisheries Research Directorate, Egypt.
- GURNEY, R., 1927.—Report on the Crustacea: Copepoda and Cladocera of the Plankton. Zoological results of the Cambridge Expedition to the Suez Canal, 1924, in: Transact. Zool. Soc., London.
- MACDONALD, R., 1933.—An Examination of Plankton Hauls made in the Suez Canal during the year 1928. In: Notes and Memoirs No. 3, Fisheries Research Directorate, Egypt.
- STEUER, A., 1935.—The Fishery Grounds near Alexandria. Preliminary Report—Notes and Memoirs No. 8, Fisheries Research Directorate, Egypt.
- STEUER, A., 1933.—Thalassia. Vol. I-N.4, Zur Fauna des Canal Di Leme Bei Rovigno, Jena.

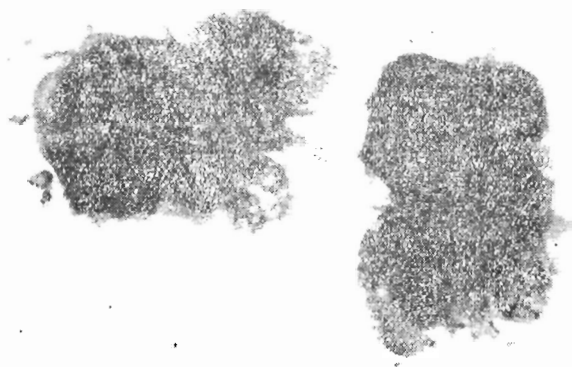


PLATE I.

Podon polyphemoides—Microphotograph by Ghazzawi.



PLATE II.

Penilia avirostris Dana with larvae in the brood pouch.
Microphotograph by Ghazzawi.



Penilia Avirostris Dana with eggs in the brood pouch.
Microphotograph by Ghazzawi.

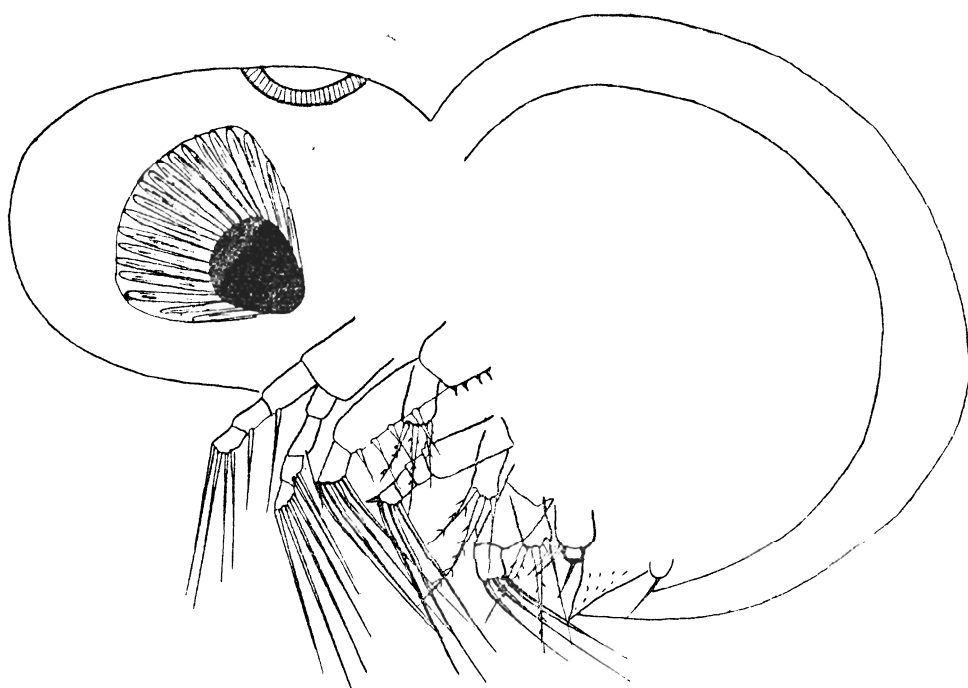


FIG 1.

Podon Polyhemoides (Leuck.)

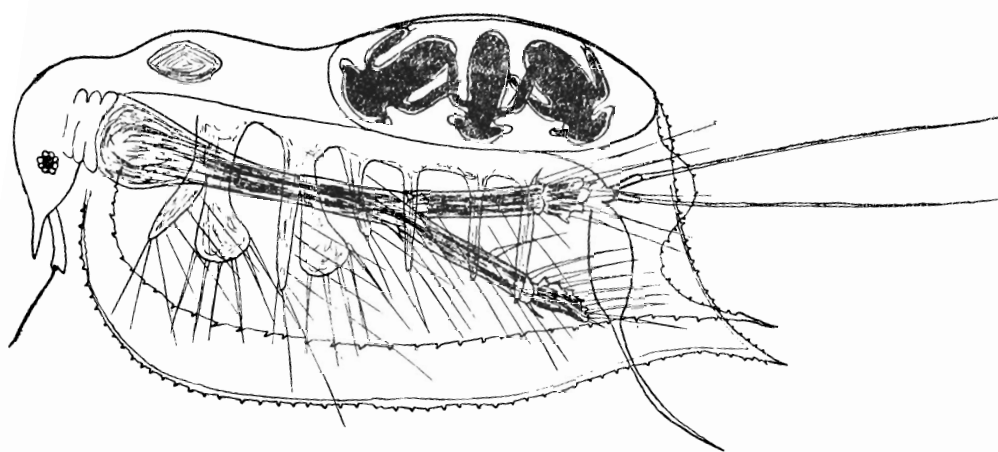


FIG. 2.
Penilia Avirostris Dana.